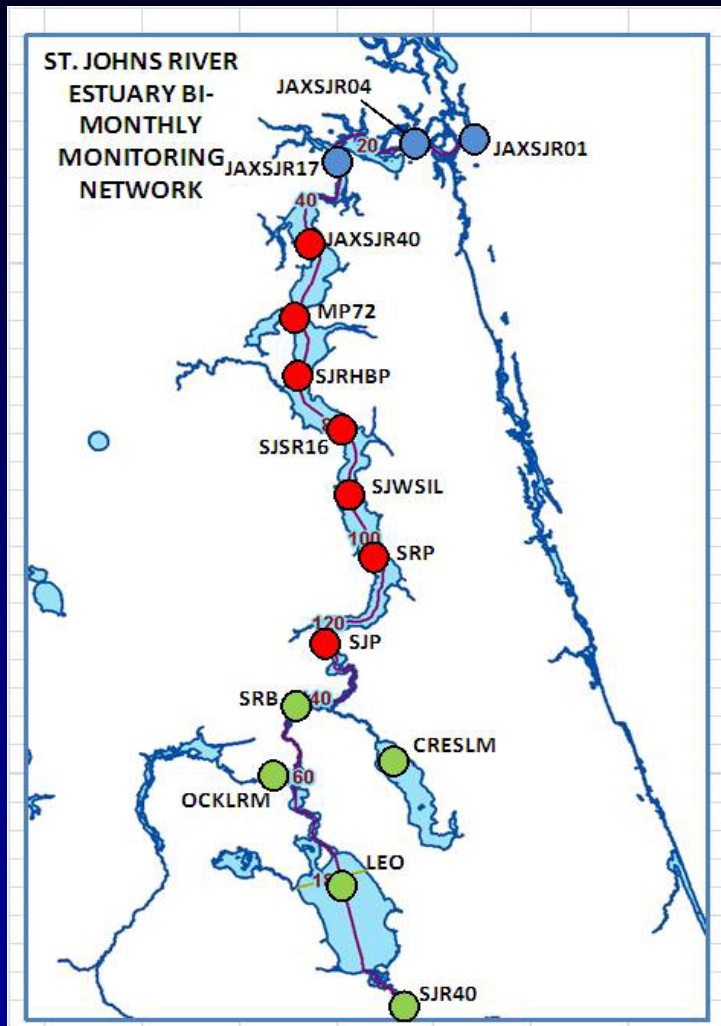
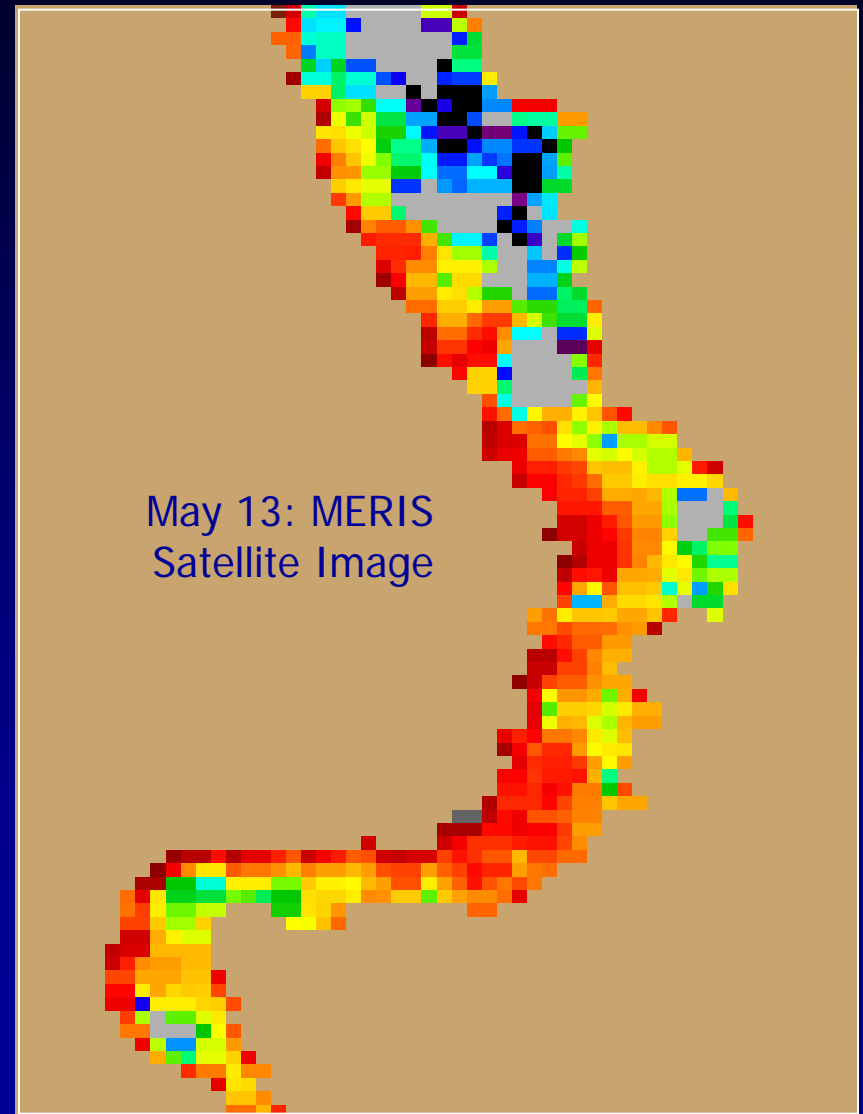
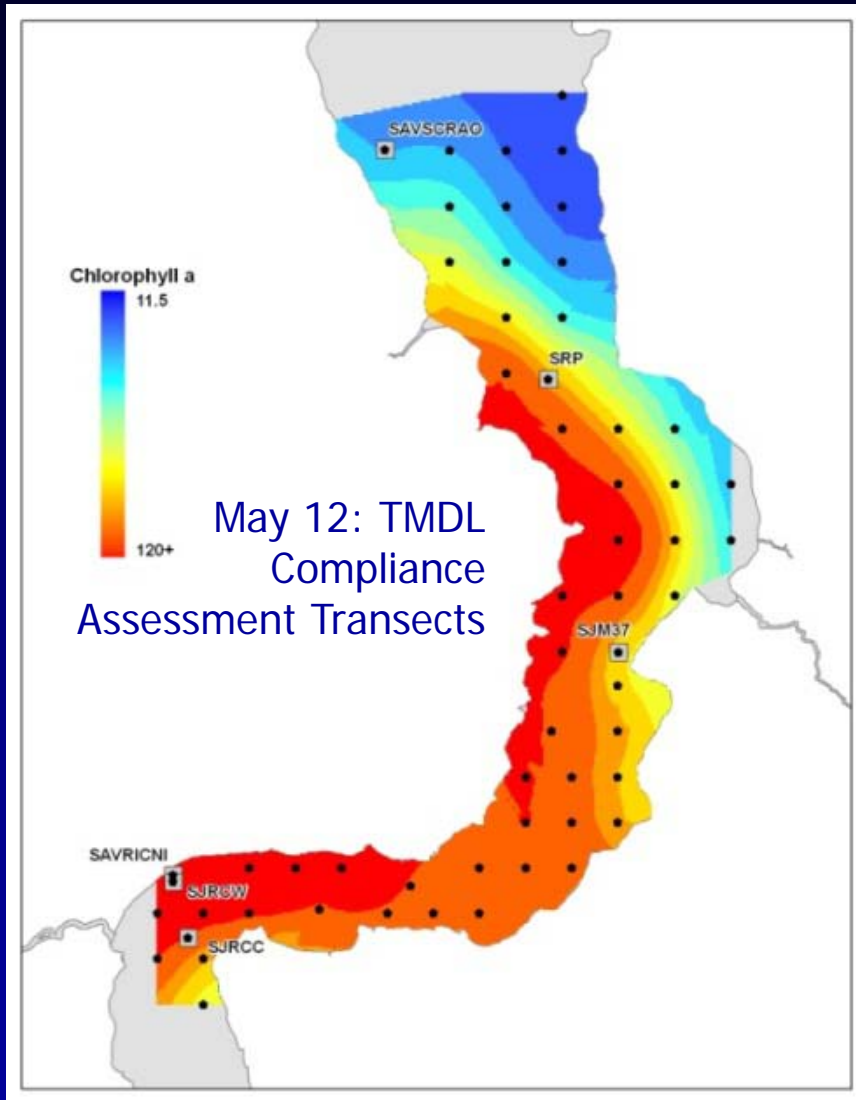


# SJRWMD Surface WQ Monitoring Summary

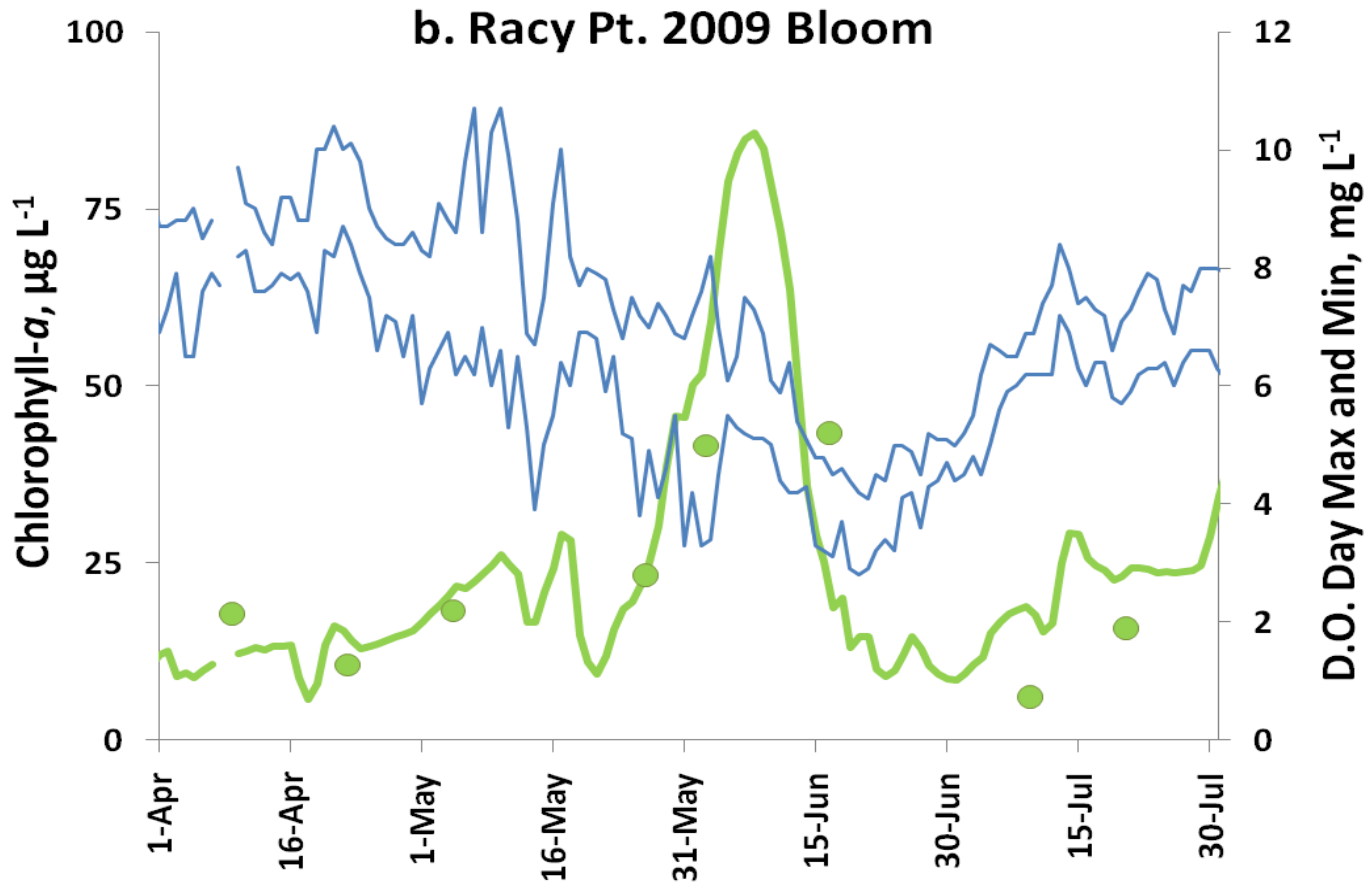


- River Mainstem Ambient
  - Plankton, cyanotoxins, recon
  - Continuous (USGS and Others)
- River Littoral/Near Shore
- Major Inflows (External Load)
  - BMAP Storm Events
  - TCAA, Dairy Major Tribs
  - Point Source: DMRs
  - Major Boundaries
- Process/Performance Assmt.
  - RST Performance
  - River Intensive
  - Ocklawaha Patterns

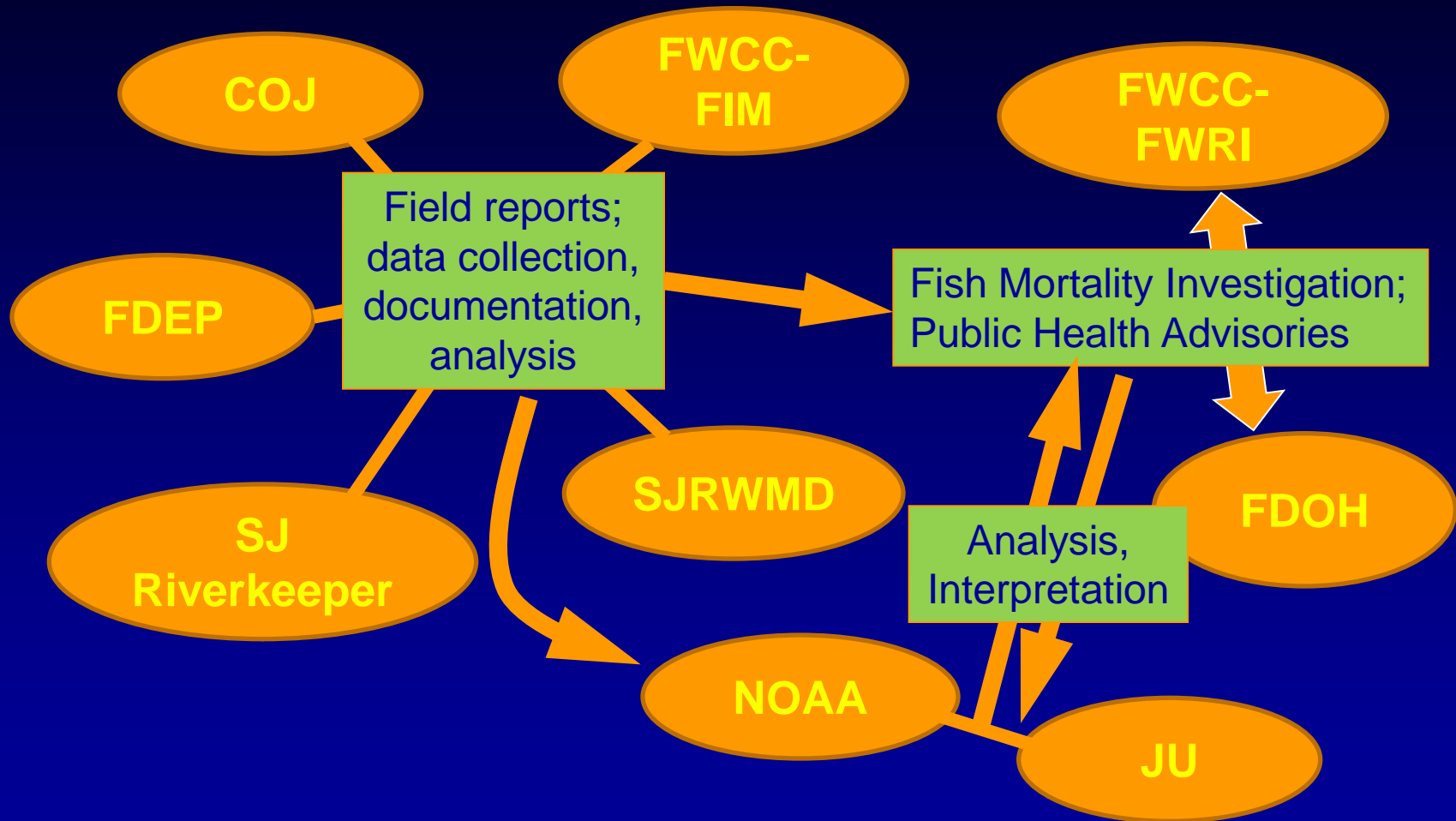
# New Tools: NOAA MERIS Satellite Interpretation



# New Tools: Continuous Monitoring



# Interagency Roles and Coordination\*



\*Action plan established in *Resource Guide for Public Health Response to Harmful Algal Blooms in Florida, 2009*

# Refinements and Attention Needs?

- TMDL BMAP Monitoring
  - Monitoring in place; need for comprehensive re-appraisal
- Bio-Eco Interactions in the Oligohaline
  - More complete microbial ecology needed
- Linkages
  - Are we connecting the dots between external load, WQ, habitat, aquatic fauna and people, and between do-ers and decision-makers
- Information Dissemination
  - Best media options; stewardship & QA